

What do we do?

We collect, manage and store georeferenced records of species, habitats and protected sites in Bedfordshire and Luton.

Every stage of the planning process requires information on habitats and species.

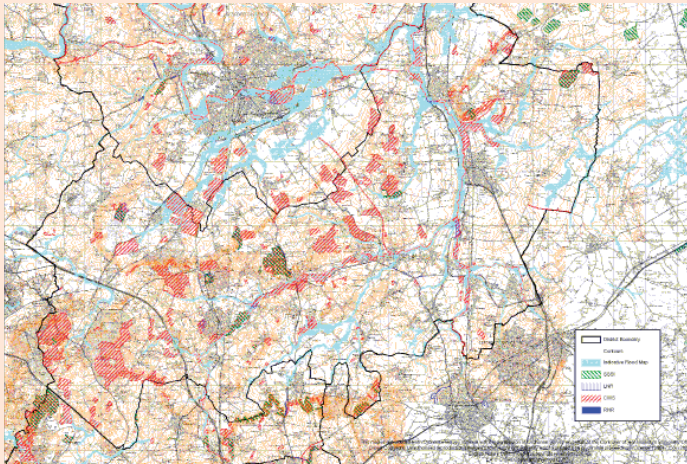
All of this information is available via our data search service.

Development plan policies and planning decisions should be based upon up-to-date information about the environmental characteristics of their areas.

In taking decisions, local planning authorities should ensure that appropriate weight is attached to designated sites of international, national and local importance; protected species and to biodiversity and geological interests within the wider environment.

ODPM (2005), Planning Policy Statement 9: Key Principles

With environmental information held across many disparate



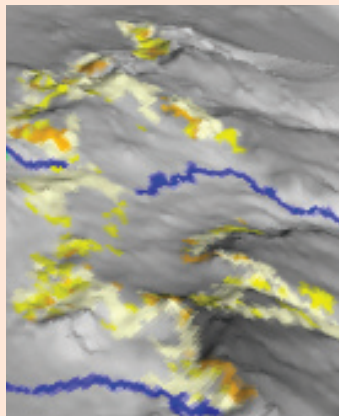
Above: landscape and designations, mid-Bedfordshire. Below: elevation model of calcareous grassland habitat opportunities north of Luton

organisations, both public and voluntary, a LRC (Local Records Centre) is the most effective and sustainable mechanism for facilitating access to this. It would be good for all local authorities to contribute to the establishment and running of an LRC...

ODPM (2006), *Planning for Biodiversity and Geological Conservation: A Guide to Good Practice*, Section 2.31

Every public authority must, in exercising its functions, have regard, so far as is consistent with the proper exercise of those functions, to the purpose of conserving biodiversity.

NERC Act (2006), s.40(1)



BRMC
c/o The Wildlife Trust
Priory Country Park
Barkers Lane
Bedford
MK41 9DJ
Tel: (01234) 355435
brmc@bedsbionet.org.uk
www.bedsbionet.org.uk

We are:

- Not for profit
- Objective
- Impartial
- Based at the Wildlife Trust
- Run by a partnership of local authorities, central government and local environmental groups

Making ecological data safe, reliable and accessible

Bedfordshire & Luton
**Biodiversity
 Recording &
 Monitoring
 Centre**



Bedfordshire & Luton
**Biodiversity
 Recording &
 Monitoring
 Centre**



Providing
 ecological data services
 for local authorities
 in Bedfordshire and Luton

What can we do for you?



Distribution of important arable plant and animal species in the upper Ouse valley

Maps reproduced by permission of Ordnance Survey on behalf of HMSO. © Crown Copyright 2010. All rights reserved. Ordnance Survey Licence number 100049029

Our pledge

We will:

- Charge a fair fee for our services (charges are for the provision of service and not for data)
- Maintain good relationships with data suppliers
- Share best practice
- Work to make information safe, reliable and accessible

Please check our website for our latest policies.

Services

We can provide:

- Ecological data for Annual Monitoring Reports (AMR)
- Ecological data for reporting on the management of local sites (NI 197)
- Specific data searches
- Regularly updated non-statutory sites GIS layers
- GIS mapping services
- Site-based information: reports, photos, species and habitat lists, citations

The Bedfordshire Natural History Society plays a key role in supplying the BRMC with verified species data through their County Recorders

Species data

We hold current georeferenced data on:

- Most species groups in Bedfordshire and Luton
- UK Biodiversity Action Plan (BAP) species
- Species of Principal Importance for England (NERC Act s.41)
- CROW Act s.74 species
- European Protected Species
- Red Data Book Species
- and more!

Habitat data

We also hold current georeferenced data on:

- UK BAP Priority Habitats
- County Wildlife Sites (CWS)
- Roadside Nature Reserves (RNR)
- Local Geological Sites
- Publicly accessible wildlife sites
- Important Arable Plant Areas
- Green Infrastructure networks from parish to county scale
- Archived photos of Bedfordshire's rural landscape
- and more!